



CGS Premier Inc.
S64 W15586 Commerce Center Parkway
Muskego, WI 53150
(262) 641-7414
www.cgspremier.com

Estimate

Tattoo Removal Van

REV 3

May 23, 2018



PRICING PAGE:

Total price as specified, FOB origin	\$	63,509.00
--------------------------------------	----	-----------

Delivery terms: Ask your Sales Representative

Payment Terms: 50% Down 50% upon delivery

Quote is firm for 30 days from specification date

Quoted price does not include any applicable FET, federal, state or local tax unless specified

**Estimate
Tattoo Removal Van**

Item	Qty	
1.00		<u>CHASSIS:</u>
1.01	1	2018 Ford Transit 350 Van, diesel, high roof / extra-long or similar will be supplied by customer for up-fit.
2.00		<u>GRAPHICS:</u>
2.01		Produce and install high definition digital 3M Scotchprint (spot) graphic, includes proofs and templates for body and cab.
3.00		<u>WALLS, CEILING AND FLOOR:</u>
3.01		Walls shall be insulated and covered with 1/2" structural plywood sub wall. <ul style="list-style-type: none"> • Install 2-1/2" fiberglass with an R-8 rating • Cover interior wall supports with 1/2" structural plywood
3.02		Cover sub wall with smooth finish Kemlite 0.075" fiberglass reinforced plastic (FRP) lining. Wall covering shall be a continuous piece front to back.
3.03		Insulate ceiling with fiberglass insulation. Cover interior roof supports with plywood sub ceiling.
3.04		Cover sub ceiling with 34100 Crystalline fabric. Flammability rating passes corner burn NFPA-265; UBC 8-2 tunnel test, class A rating ASTM E-84.
3.05		Floor underlayment 5/8" exterior grade tongue and groove structural plywood.
3.06		Install Lonseal Loncoin II Onyx non-skid commercial grade PVC flooring. Flooring shall be full width/full length, no seams.
3.07		All bulkheads shall be covered with smooth fiberglass reinforced plastic lining.
4.00		<u>GALLEY:</u>
4.01	1	Dometic, AC/DC CFX35W Refrigerator/Freezer 1.1 Cu. Ft. Cooler Style Portable, also provides a portable power supply for your phone or electronics that utilize a USB Port. <ul style="list-style-type: none"> • Deep-freeze down to -7°F • Overall Dimensions, 16.2"H x 27.2"W x 15.7"D • Power Source, 12V DC /120V AC • Capacity, 1.1 Cu. Ft. (32 L) • Net Weight, 39 lbs • Manufacture Warranty: 2-Years
5.00		<u>SEATING:</u>
5.01	1	Install customer provided Hydraulic Facial Chair Bed & RN Stool, secure chair and stool for transit. Note: Similar to Skin Act Hydraulic Facial Chair Bed & Stool

**Estimate
Tattoo Removal Van**

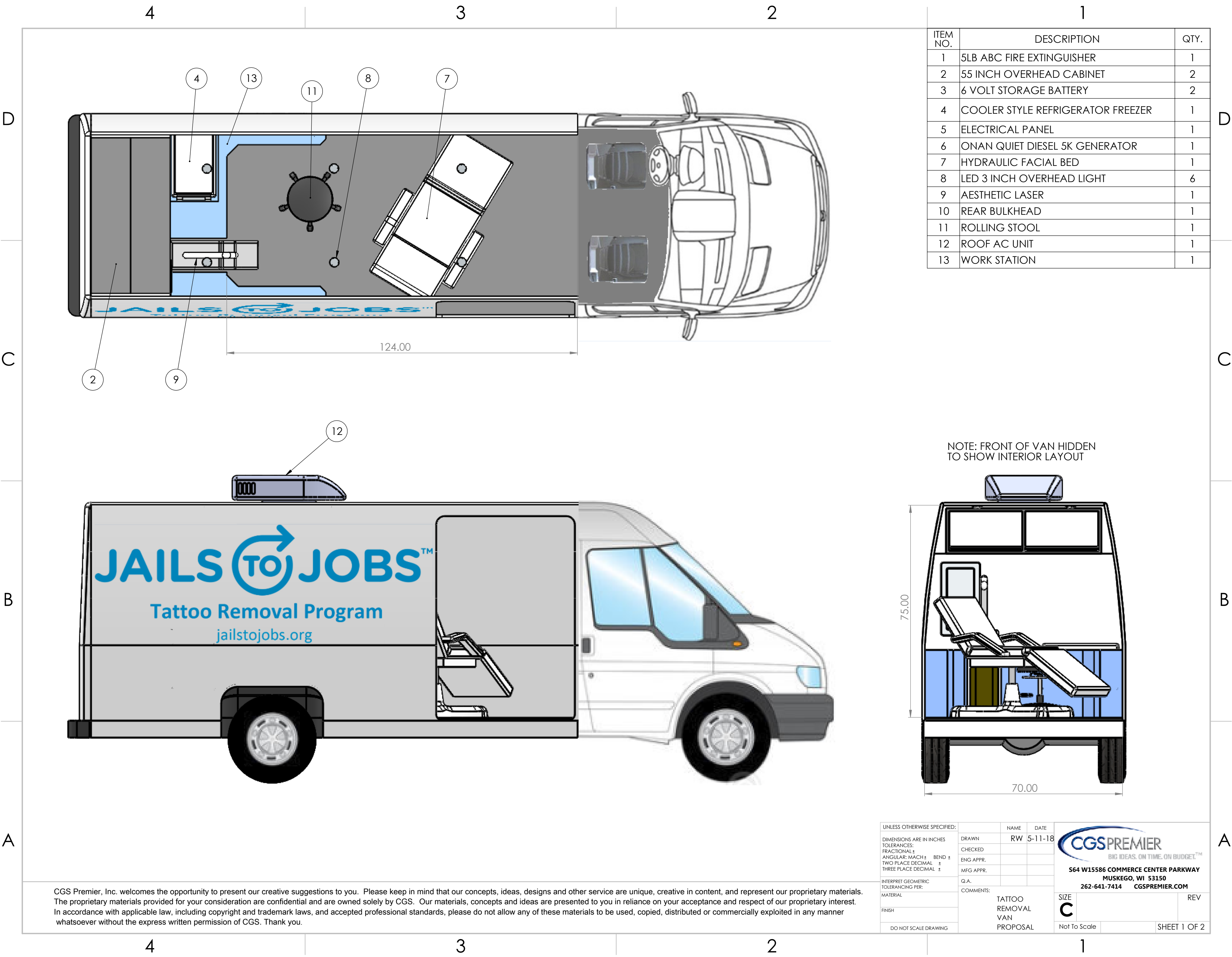
Item	Qty	
6.00		<u>CABINETS:</u>
6.01		C-Tech powder coated aluminum cabinets (color to be determined). Cabinet specifications: <ul style="list-style-type: none"> • Base cabinets, 0.080" powder coated aluminum with anodized aluminum frames. • Base cabinet doors are double shell. • Overhead cabinets, 0.064" powder coated aluminum with anodized aluminum frames. • Overhead cabinet doors are double shell. • Overhead cabinet doors swing up. • Overhead cabinets to have one adjustable shelf per door (24" high and taller cabinets only)
6.02		Overhead cabinets as shown on drawing.
6.03	4	Gas shock supports for overhead cabinet doors.
6.04	2	LED under cabinet light.
6.05		Gusset support for counter top.
6.06		Laminate countertops, all exposed edges covered with flexible PVC T-molding.
6.07	1	Waste drop in counter top.
6.08	1	Waste can below counter top.
6.09	1	120/240Vac Control Center, 12Vdc power panels, master disconnect switch and auto reset breakers. Location shall be based on layout.
7.00		<u>HVAC SYSTEM:</u>
7.01	1	Coleman Polar Mach 8 series low profile 13,500 nominal Btu/hr air conditioner. <ul style="list-style-type: none"> • Condensate pump. • 6,000 Btu/hr heat strip
7.02	1	Espar, Diesel-fired furnace with thermostat. 12,000 Btu/hr direct discharge 12Vdc powered. Exhaust shall be routed street side.
8.00		<u>120/240VAC ELECTRICAL SYSTEM:</u>
8.01	1	Onan Commercial Quiet Diesel 5.0-kW 120/240 volt AC generator 5.0 HDKBC (or current model) mounted in a custom fabricated all aluminum compartment. Generator has the following specifications: <ul style="list-style-type: none"> • Sound rating of 68 dB(A) at 10 ft (3m) before installation, half load • 4-cylinder liquid cooled diesel engine. • Fuel consumption is as follows: 50% load = 0.39 gal/h, full load = 0.60 gal/h. • Generator temperature operating extremes: -20 F to 120 F • Frequency regulation no-load to full-load: +/- 0.1% • Random frequency variation for constant load: +/- 0.5% • 34-1/2"L x 23"W x 20-1/2"H, 400 lb

**Estimate
Tattoo Removal Van**

Item	Qty	
8.02	1	50A-120/240Vac and 12Vdc combined electrical control panel with the following features: <ul style="list-style-type: none"> • Generator and shore power main breakers • AC UL listed magnetic/hydraulic branch circuit breakers with LED indicators • DC UL listed magnetic/hydraulic circuit breakers with LED indicators • Digital AC meters: voltage, frequency amperage • Digital DC voltmeter • Generator stop/start switch, generator hour meter
8.03	1	Marinco 30A-125Vac waterproof shore power inlet, 50-ft. 30A-125Vac shore power cord.
8.04	2	Interior duplex receptacle with dual USB charging ports, 20A-125Vac.
9.00		DC ELECTRICAL SYSTEM:
9.01	1	60 amp electronic converter/charger. Product features: <ul style="list-style-type: none"> • Charges up to three banks of batteries at the same time. • UL listed for safety. • Manual reset circuit breaker. • Reverse battery protection. • Electronic current limiting. • High voltage protection.
9.02	1	Two (2) 6V Deep Cycle Glass Mat Batteries mounted in the interior in custom fabricated sealed battery box vented to exterior.
9.03	1	Battery combiner automatically combines the battery banks during charging and isolates when no charging sensed on either bank. A three position control switch allows an operator to manually combine or separate batteries, to jump start engine or troubleshoot a failure.
9.04	1	Main battery disconnect switch.
9.05	6	Overhead lighting, Optronics 3" diameter, 6 diode LED white surface mounted light with chrome finish trim ring. <ul style="list-style-type: none"> • Lifetime LED Warranty
9.06	1	Whelen PELCC, LED porch light with chrome housing.
		12VDC WIRING REQUIREMENTS: <ul style="list-style-type: none"> • 2-gauge minimum copper stranded battery cable shall be used for 12Vdc main supply lines. All cable runs shall be full length, no splices. All cable terminals shall be staked and soldered. All cable shall be enclosed in convoluted polyethylene tubing and the ends of the cable shall be sealed with color-coded shrink-wrap identifying the function of the cable.
10.00		MISCELLANEOUS ELECTRONICS:
10.01	1	Install customer provided Aesthetic Laser. <ul style="list-style-type: none"> • Electrical requirements, 220- 230 V AC; 10A; 50/60 Hz • Dimensions and weight, 10"(W) x 31"(L) x 31"(H); 154lbs Note: Laser shall be strapped for transit. Laser is expected to roll in and out of its place frequently.

**Estimate
Tattoo Removal Van**

Item	Qty	
11.00		<u>SAFETY:</u>
11.01	1	Fire extinguisher 5LB, dry chemical.
11.02	1	First Alert, 9-volt Carbon Monoxide / Smoke alarm.
11.03	1	US DOT triangle reflector kit with three (3) triangles, Includes plastic storage case. (Shipped loose)
12.00		<u>MANUALS:</u>
12.01	1	Complete manual set, including the following (as applicable): <ul style="list-style-type: none"> • As-built specifications with interior and exterior drawings as used for production of the vehicle. • Chassis and body owner's manuals. • Warranty and Return Authorization procedures. • All individual component manuals and warranty registration cards as provided by component manufacturers. Customer is responsible for completing warranty cards and mailing them to manufacturers.
13.00		<u>MISCELLANEOUS:</u>
		Customer shall pick up vehicle after build, delivery not included.
13.01		CGS warranty, covering 1 year for manufacturer's defects in materials and workmanship.



CGS Premier, Inc. welcomes the opportunity to present our creative suggestions to you. Please keep in mind that our concepts, ideas, designs and other service are unique, creative in content, and represent our proprietary materials. The proprietary materials provided for your consideration are confidential and are owned solely by CGS. Our materials, concepts and ideas are presented to you in reliance on your acceptance and respect of our proprietary interest. In accordance with applicable law, including copyright and trademark laws, and accepted professional standards, please do not allow any of these materials to be used, copied, distributed or commercially exploited in any manner whatsoever without the express written permission of CGS. Thank you.

UNLESS OTHERWISE SPECIFIED:		NAME	DATE
DIMENSIONS ARE IN INCHES		DRAWN	RW 5-11-18
TOLERANCES:		CHECKED	
FRACTIONAL: ±		ENG APPR.	
ANGULAR: MACH ± BEND ±		MFG APPR.	
TWO PLACE DECIMAL ±		Q.A.	
THREE PLACE DECIMAL ±		COMMENTS:	
INTERPRET GEOMETRIC TOLERANCING PER:		TATTOO REMOVAL VAN PROPOSAL	
MATERIAL			
FINISH			
DO NOT SCALE DRAWING			

CGSPREMIER
BIG IDEAS. ON TIME. ON BUDGET.™
564 W15586 COMMERCE CENTER PARKWAY
MUSKEGO, WI 53150
262-641-7414 CGSPREMIER.COM

SIZE	REV
C	
Not To Scale	SHEET 1 OF 2

D

D

C

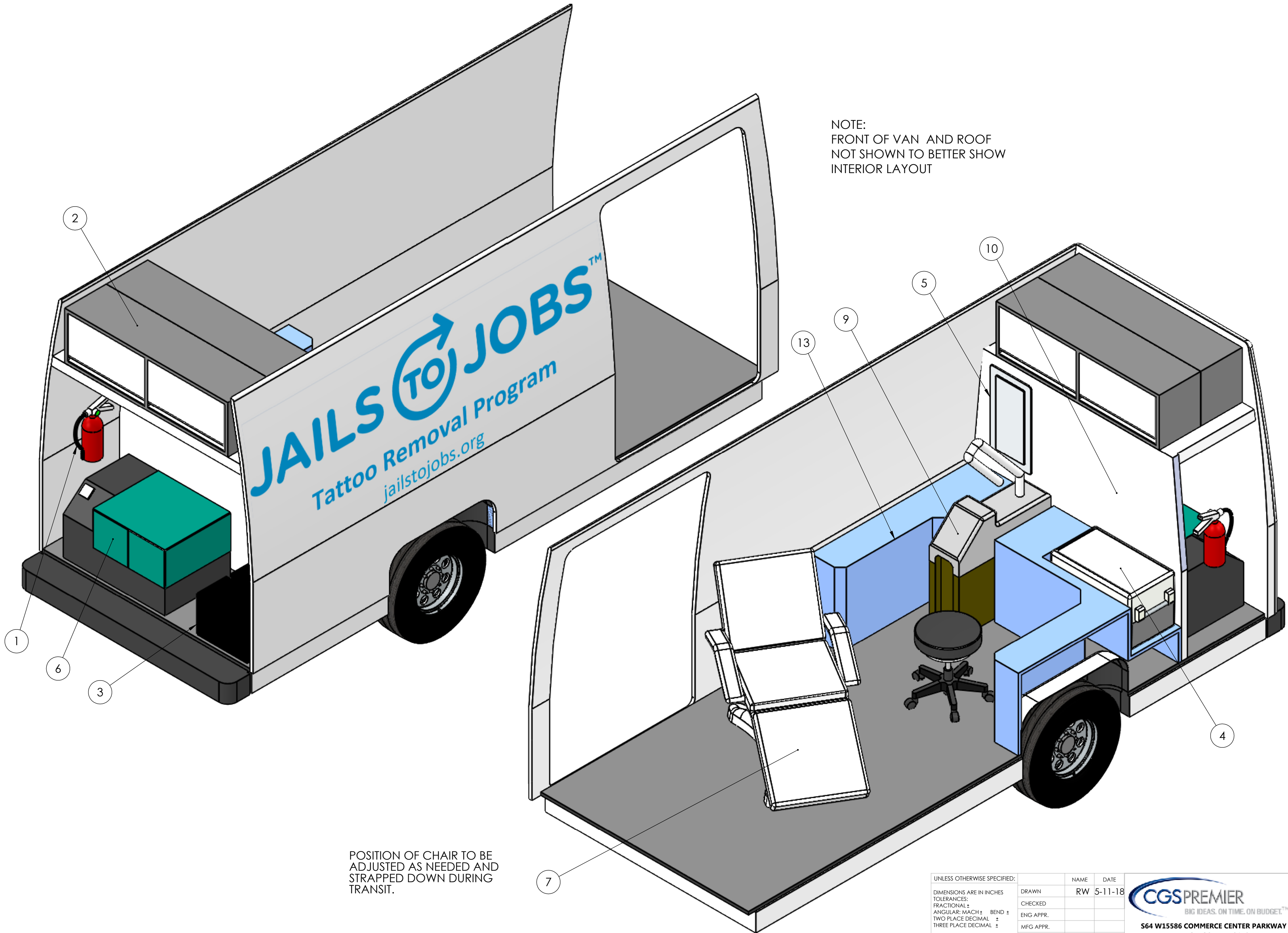
C

B

B

A

A



CGS Premier, Inc. welcomes the opportunity to present our creative suggestions to you. Please keep in mind that our concepts, ideas, designs and other service are unique, creative in content, and represent our proprietary materials. The proprietary materials provided for your consideration are confidential and are owned solely by CGS. Our materials, concepts and ideas are presented to you in reliance on your acceptance and respect of our proprietary interest. In accordance with applicable law, including copyright and trademark laws, and accepted professional standards, please do not allow any of these materials to be used, copied, distributed or commercially exploited in any manner whatsoever without the express written permission of CGS. Thank you.

UNLESS OTHERWISE SPECIFIED:		NAME	DATE
DIMENSIONS ARE IN INCHES	DRAWN	RW	5-11-18
TOLERANCES:	CHECKED		
FRACTIONAL: \pm	ENG APPR:		
ANGULAR: MACH \pm	MFG APPR:		
TWO PLACE DECIMAL \pm	Q.A.		
THREE PLACE DECIMAL \pm	COMMENTS:	TATTOO REMOVAL VAN PROPOSAL	
INTERPRET GEOMETRIC TOLERANCING PER:		SIZE	REV
MATERIAL		C	
FINISH		Not To Scale	
DO NOT SCALE DRAWING			SHEET 2 OF 2

BIG IDEAS. ON TIME. ON BUDGET.™

564 W15586 COMMERCE CENTER PARKWAY
MUSKEGO, WI 53150
262-641-7414 CGSPREMIER.COM